

FRANK'S



The Submudline Drivepipe Whipstock

Patent # 4,733,732

For more information call 1-800-833-7265 or e-mail info@frankscasing.com
www.frankscasing.com
Copyright © 2003 Frank's Casing Crew & Rental Tools, Inc., Lafayette, LA

LICENSED TO DRIVE... THE WHIPSTOCK

Frank's is licensed to manufacture and market the Submudline Drivepipe Whipstock developed and patented by Arco Oil & Gas. The SDW - Submudline Drivepipe Whipstock is a brilliant solution to expensive and time consuming methods of reclaiming lost platform slots that may have been abandoned after years of production or abandoned while drilling.

DRIVING THE WHIPSTOCK... A SIMPLE PROCEDURE

Step 1 - All uncemented strings of pipe are pulled from the abandoned wellbore.

Step 2 - The remaining strings of pipe are cut approximately eighty (80) feet below the mudline and removed.

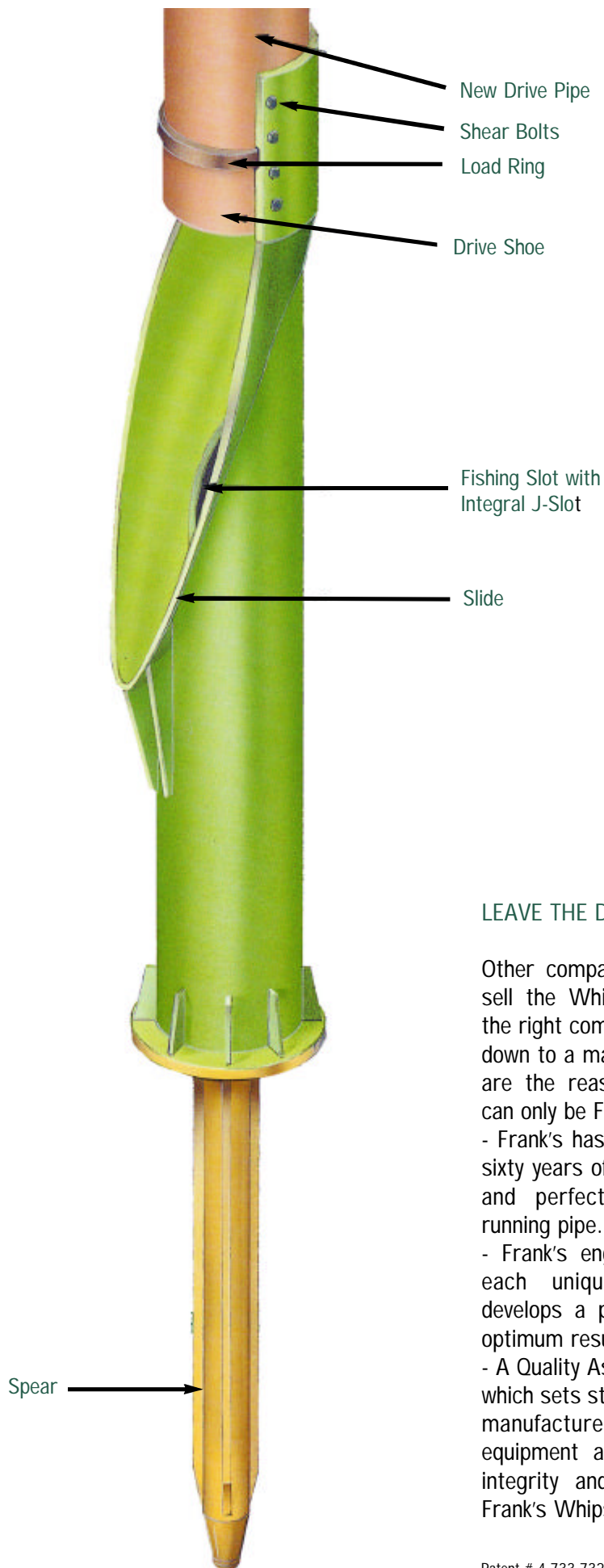
Step 3 - The new string of drive pipe along with the attached Whipstock is lowered through the platform guides to just above the old well stub.

Step 4 - The new string and Whipstock are oriented in the desired direction.

Step 5 - The weight of the new drive pipe combined with that of the hammer is applied to the shear bolts that attach the Whipstock to the new drive pipe.

Step 6 - This action shears the bolts thus allowing the new drive pipe to be lowered down the Whipstock side and deflected away from the old well structure.

Step 7 - Normal pipe driving operations may proceed.



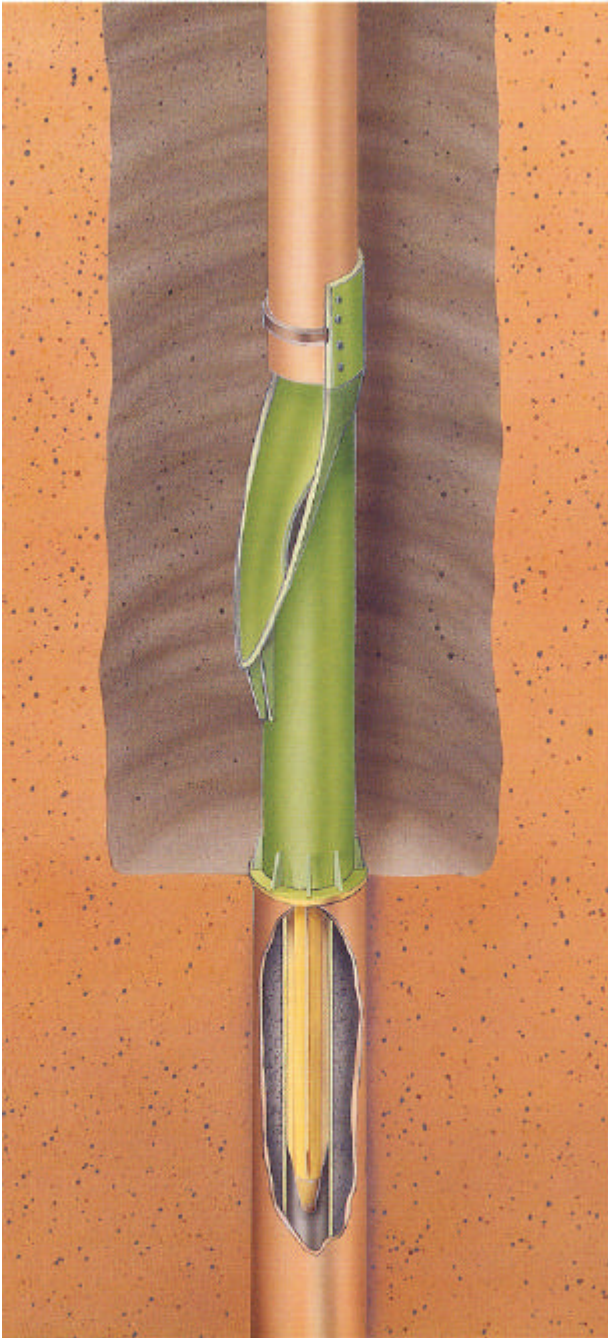
LEAVE THE DRIVING TO FRANK'S

Other companies are licensed to sell the Whipstock, so selecting the right company for the job boils down to a matter of choice. Here are the reasons why the choice can only be Frank's:

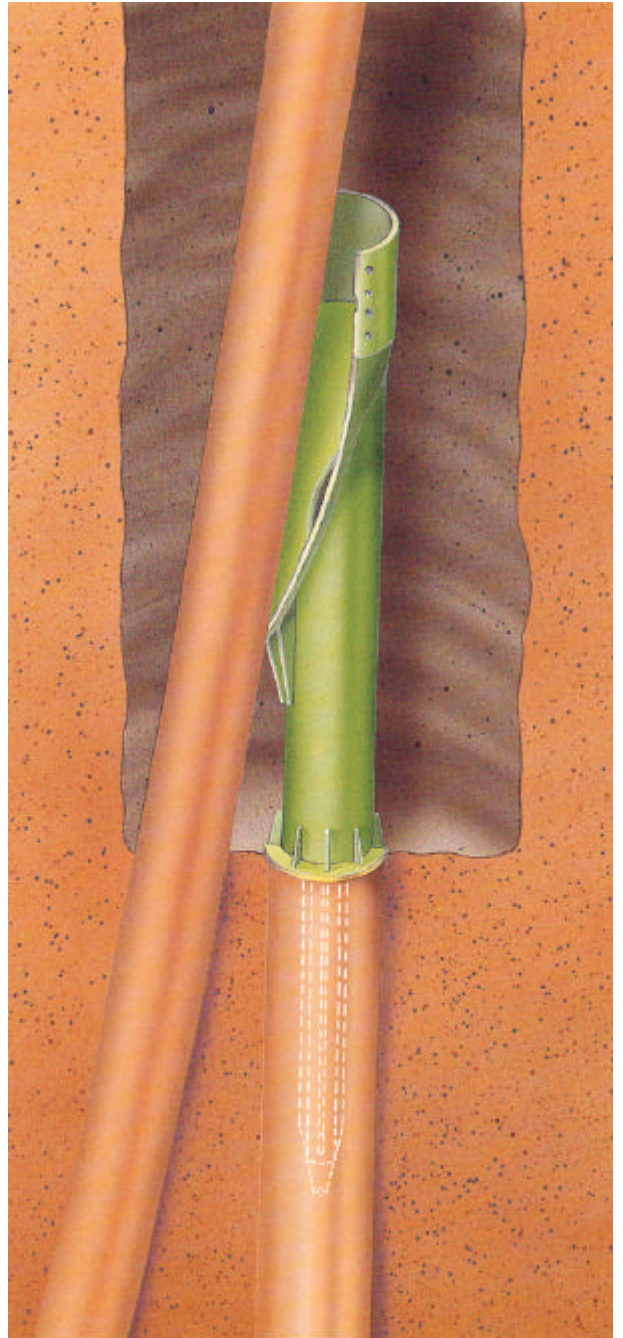
- Frank's has spent its more than sixty years of existence innovating and perfecting techniques for running pipe.

- Frank's engineering staff takes each unique application and develops a procedure to achieve optimum results.

- A Quality Assurance Department which sets strict guidelines for the manufacture of all Frank's equipment assures the absolute integrity and superiority of the Frank's Whipstock.



SDW stabbed into old pipe stub prior to shearing bolts.



Finished product: new drive pipe driven, platform slot reclaimed.